

## Creativity & Self Expression



Observers regularly noticed huge amounts of joy in the open ended environments of the artist workshop where children were able to make their own choices and be guided by their aesthetics. Most noted indicator: Playfully Exploring

“

“It’s yellow lights! It’s green lights! It’s normal lights!” Kiddo holding different colored cellophane sheets up to face and declaring what they saw.

”

Observed: 45 times

# We Read Bubbler Artists in Residence



Summer 2024 - Observing 15 of 87 Programs in 9 Libraries



Guided by the color green!



Showing off their moon walking sticks

## WHAT WE NOTICED:

Our artists were encouraged to think of open-ended, accessible projects and experiences that would allow children and families to explore, play, and put process over product. These open-ended experience, we hoped, would allow children to take the lead, and encourage social and emotional connections between children and caregivers, as well as the artists and librarians. This is exactly what we observed. Our most common indicators were of creativity and self expression, followed closely by social emotional engagement. Children were inspired by the materials, playfully explored new processes, and showed joy and pride again and again

## Social Emotional



Observed: 38 times

“I’m breaking the laws of physics!” — followed by a huge, proud grin

with Artist Elias M.

## Making Connections



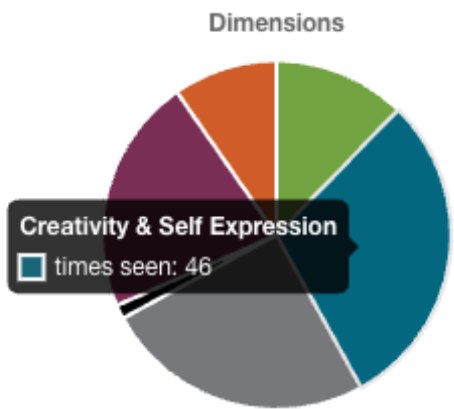
Observed: 35 times

D was annoyed that her brother J was “copying” her. We talked about how imitation can be a compliment. J said he really liked what D had created. I asked D how she felt about that, and she answered “I’m a success in life.”

with Artist Elias M.

# We Read Bubbler Artists in Residence

Summer 2024 - Observing 15 of 87 Programs in 9 Libraries



- Social Emotional Engagement - 38 Observations
- Making Connections - 35 Observations
- Problem Solving - 19 Observations
- Initiative and Intentionality - 15 Observations
- Unknown, curious - 2 Observations



Creating community while weaving



Hula hoop weaving at Pinney Library



Exploring identity with collage at Meadowridge Library.

## Problem Solving




Observed: 19 times

"I'm going to need a lot of paint to fill this paper up!" This young artist realized as he was using the red watercolor wash over his crayon and oil pastel design.

with Artist Renee

## Initiative & Intentionality



Observed: 15 times

Setting clear intentions and goals with caregiver when presented with choices. "I don't want to make a gnome, I want to make a map!"

with Artist Katie L.

## MOST COMMON DIMENSION



Summary of most noted dimension

“

Pull quote from observation

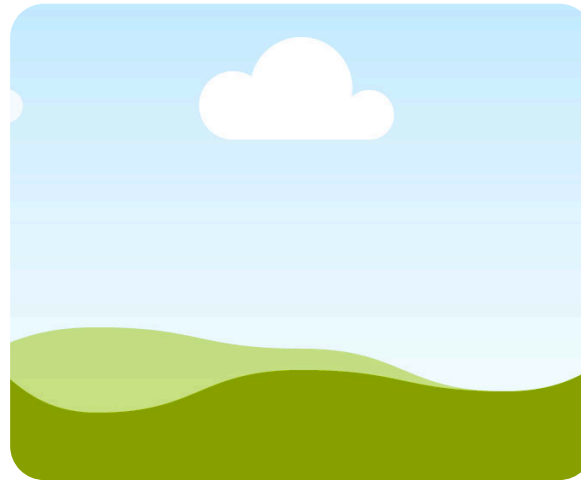
”

Observed: 45 times

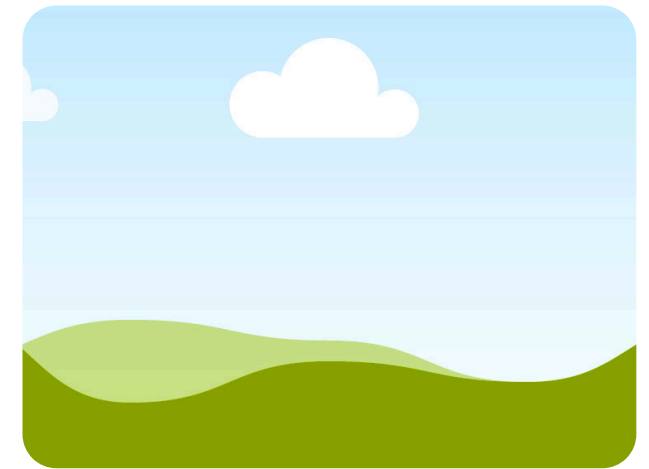
# name of program or series

Library  
Logo

Date and important stats



caption



caption

## WHAT WE NOTICED:

Summary of the project or important noted elements.

What were the goals

Did you achieve them?

## Highlight Dimension



Observed: # times

Quote from observer  
or patron

Attribution

## Highlight Dimension



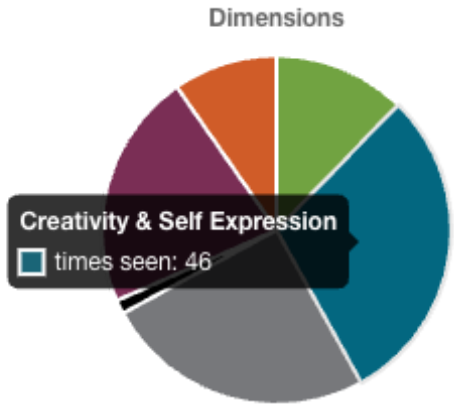
Observed: # times

Quote from observer or  
patron

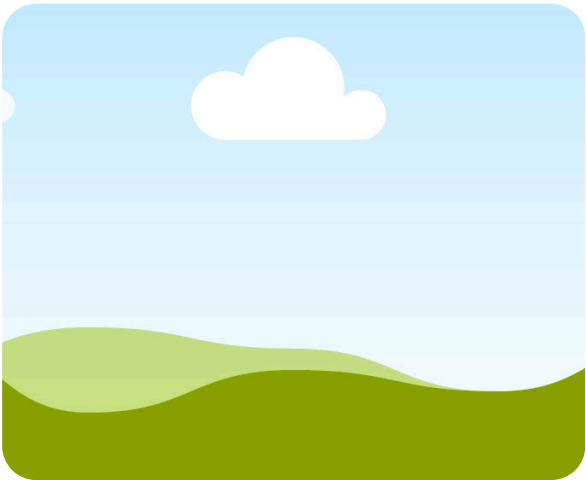
Attribution

# Title of program or series

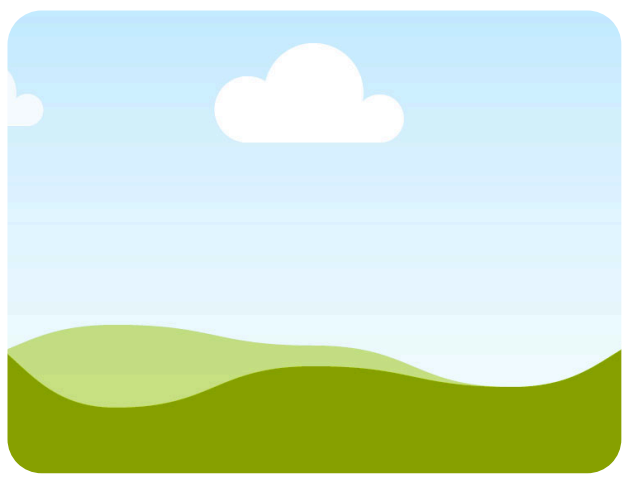
Summer 2024 - Observing 15 of 87 Programs in 9 Libraries



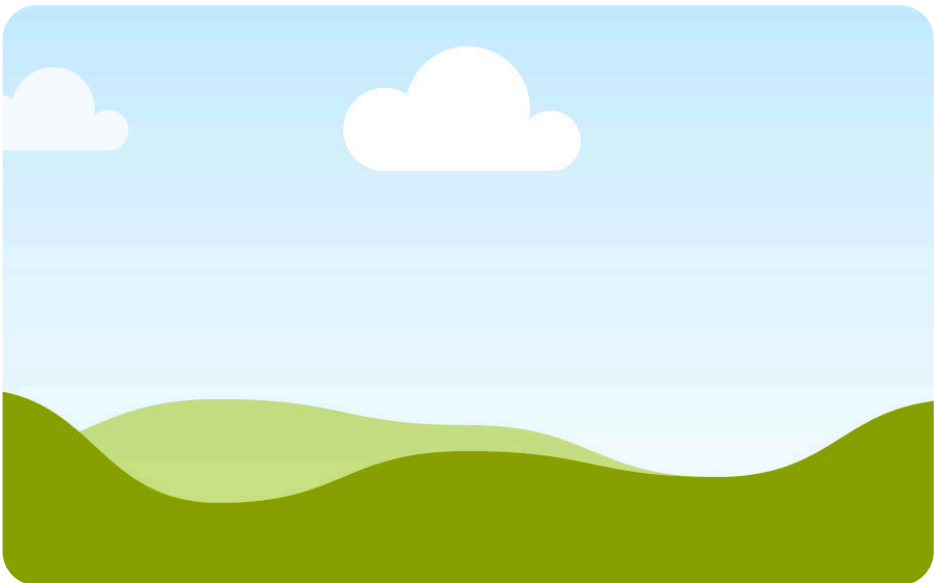
- Social Emotional Engagement  
- 38 Observations
- Making Connections  
- 35 Observations
- Problem Solving  
- 19 Observations
- Initiative and Intentionality  
- 15 Observations
- Unknown, curious  
- 2 Observations



caption



caption



caption

## Highlight Dimension

Observed: # times

Pull quote from observer or patron

attribution

## Highlight Dimension

Observed: # times

Pull quote from observer or patron

attribution

## Most Commonly Noted Dimension



Summary of what you noticed within that dimension

“

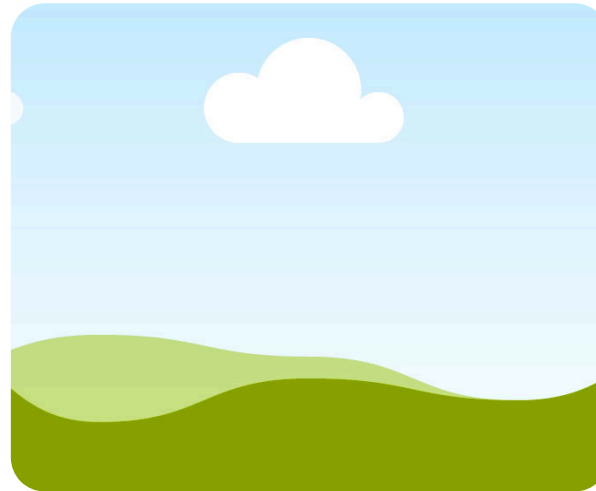
Pull quote or observation note

”

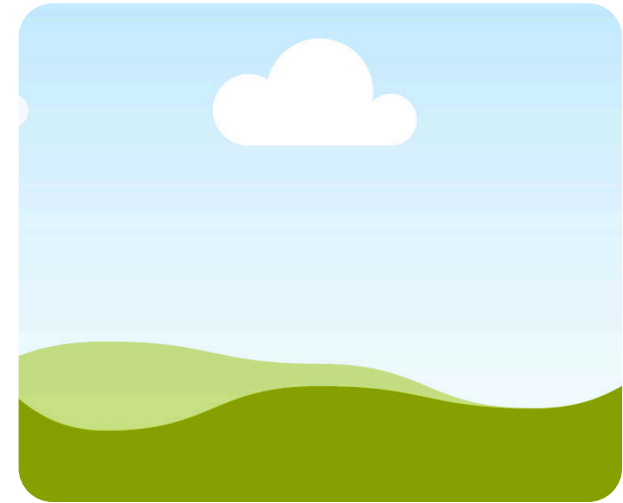
Observed: # times

# Title of program or series

Summary of # of programs - Attendance - Dates - Etc



Caption



Caption

## Social Emotional



Observed: 38 times

Quote

attribution

## Initiative & Intentionality



Observed: 15 times

Quote

attribution

## Problem Solving



Observed: 19 times

Quote

attribution

## Making Connections



Observed: 35 times

Quote

attribution